

# GMG

## Grinder Pumps Heavy Duty Designed



Grinder pumps for heavy duty applications

### Applications

Drainage of sewage and dirty water, operation in septic tanks and purifying installations.

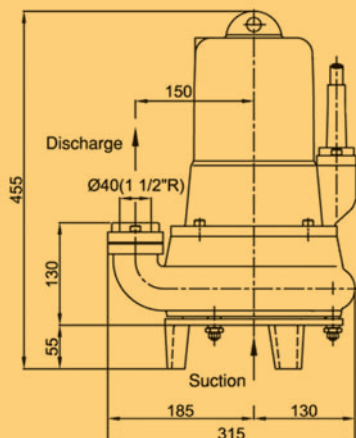
- For removal of sewage from premises, small houses and buildings located at a distance and below the main sewer system.
- Removal of sewage from basements.
- Removal of sewage from hotels, motels, restaurants, holiday villages and seaside premises.
- For petrol stations, garages and motorway service stations.
- For drainage purposes.
- Removal of fibrous waste from purifying plants.
- For slaughter houses, paper plants, food processing plants, agricultural and similar fields.

### Materials

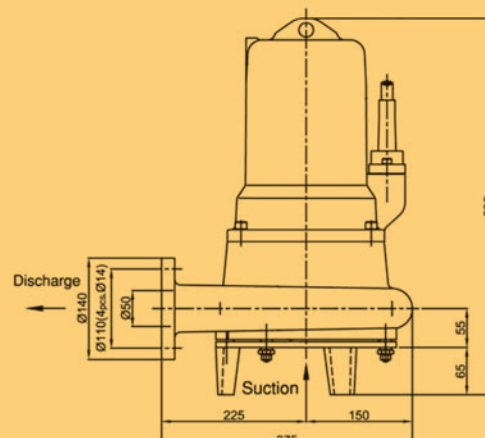
- Motor casing and volute casing in cast iron GG-20
- Shaft Stainless steel (1.4021)
- Pump impeller (Vortex) cast iron GG-25
- Bolts and nuts in Stainless steel
- Stationary and rotating blades in hardened machined special steel
- Mechanical seal SIC/SIC - NBR
- Cable H07RN-f

### Motor

- Asynchronous, two poles.
- IP 68 protection.
- Class F insulation.
- Continuous operation.
- Three phase version water-cooled motor.
- Built-in thermal protection by thermistors.
- Seal leak sensor in oil chamber.



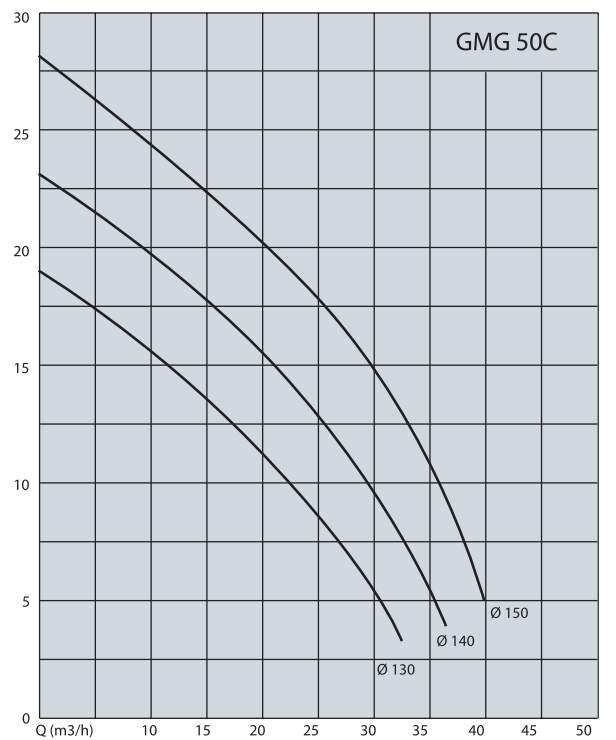
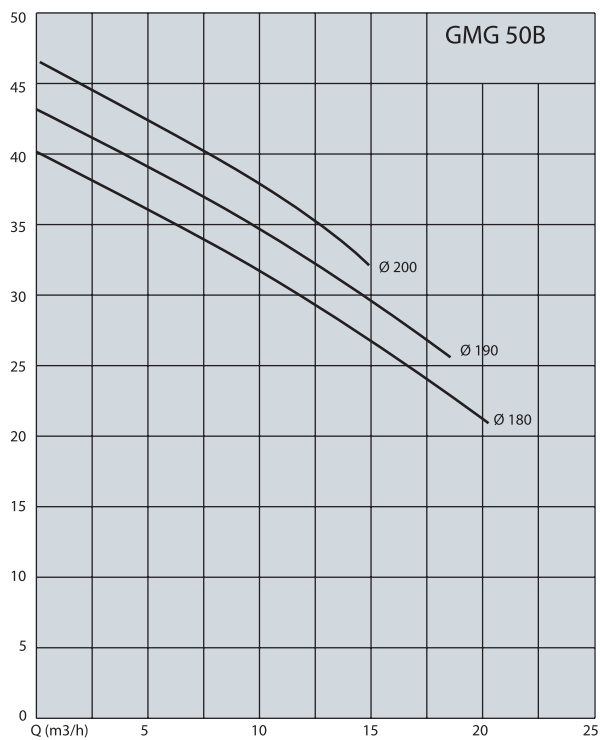
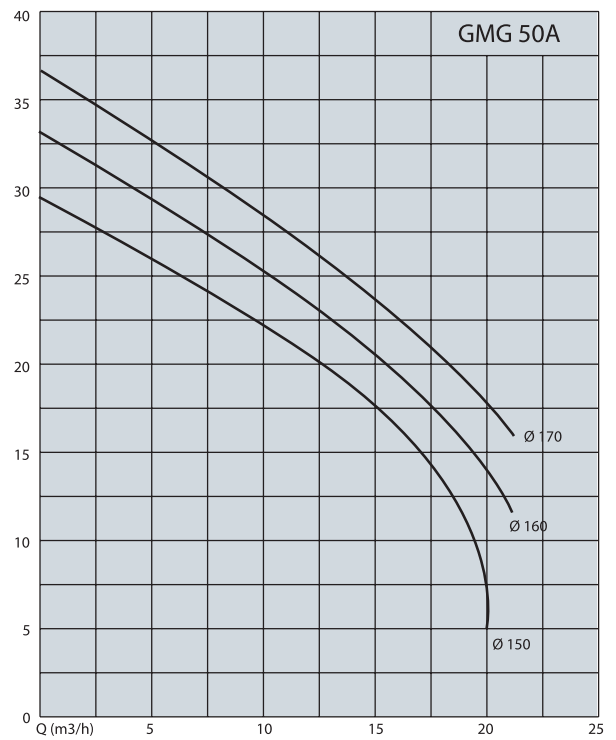
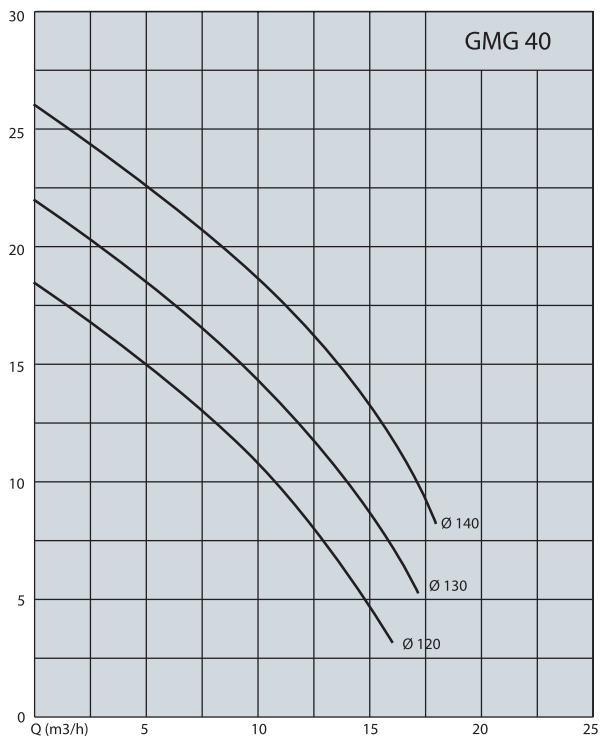
GMG 40



GMG 50

# GMG

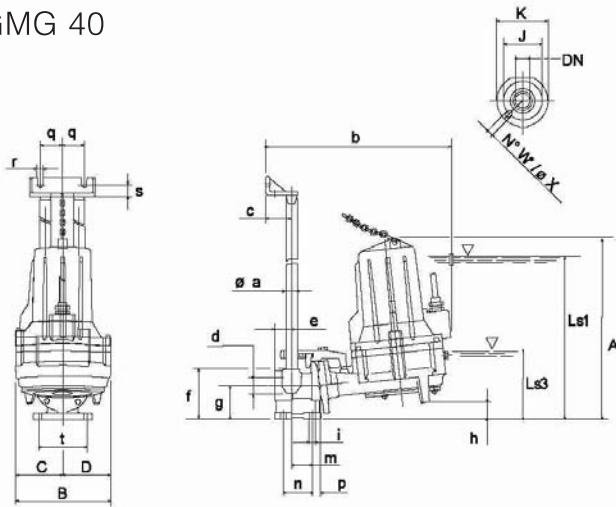
## Grinder Pumps Heavy Duty Designed



# GMG

## Grinder Pumps Heavy Duty Designed

### GMG 40



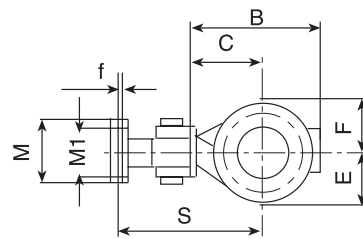
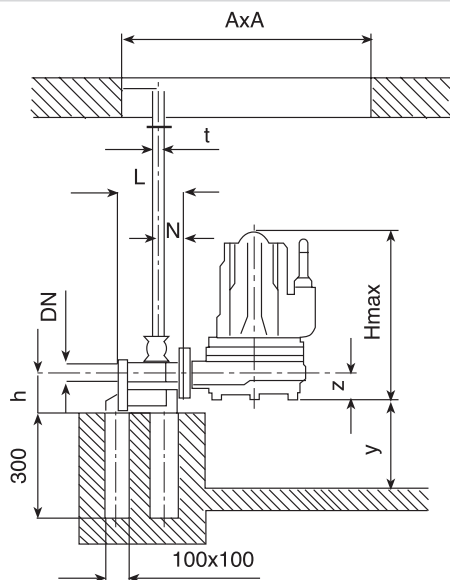
|     |     |     |     |    |     |        |
|-----|-----|-----|-----|----|-----|--------|
| A   | B   | b   | C   | c  | D   | d      |
| 437 | 224 | 463 | 112 | 60 | 112 | 1 1/2" |

|        |    |     |    |    |    |      |
|--------|----|-----|----|----|----|------|
| DN     | e  | f   | g  | h  | i  | Jmax |
| 40/PN6 | 40 | 120 | 80 | 37 | 14 | 110  |

|      |     |     |     |    |    |      |
|------|-----|-----|-----|----|----|------|
| Jmin | K   | Ls1 | Ls3 | m  | n  | Øa   |
| 100  | 146 | 371 | 171 | 50 | 70 | 3/4" |

|    |    |      |    |    |     |   |
|----|----|------|----|----|-----|---|
| ØX | p  | q    | r  | s  | t   | W |
| 18 | 15 | 52.5 | 12 | 27 | 115 | 4 |

### GMG 50



|     |     |     |     |    |     |
|-----|-----|-----|-----|----|-----|
| B   | E   | F   | S   | N  | L   |
| 348 | 148 | 148 | 401 | 81 | 201 |

|     |     |     |      |       |     |
|-----|-----|-----|------|-------|-----|
| M1  | M   | h   | Hmax | t     | c   |
| 140 | 180 | 125 | 478  | 30x40 | 200 |

|    |     |    |        |    |
|----|-----|----|--------|----|
| f  | y   | z  | AxAmin | DN |
| 14 | 100 | 75 | 650    | 2" |

| Type        | P2<br>kW | rpm  | DN     | Weight<br>kg |
|-------------|----------|------|--------|--------------|
| GMG 40-120  | 1.5      | 2800 | 1 1/2" | 44           |
| GMG 40-130  | 1.5      | 2800 | 1 1/2" | 44           |
| GMG 40-140  | 2.2      | 2800 | 1 1/2" | 44           |
| GMG 50A-150 | 3        | 2850 | 2"     | 68           |
| GMG 50A-160 | 3        | 2850 | 2"     | 68           |
| GMG 50A-170 | 3        | 2850 | 2"     | 68           |

| Type        | P2<br>kW | rpm  | DN | Weight<br>kg |
|-------------|----------|------|----|--------------|
| GMG 50B-180 | 4        | 2850 | 2" | 69           |
| GMG 50B-190 | 4        | 2850 | 2" | 69           |
| GMG 50B-200 | 4        | 2850 | 2" | 69           |
| GMG 50C-130 | 3        | 2850 | 2" | 65           |
| GMG 50C-140 | 3        | 2850 | 2" | 65           |
| GMG 50C-150 | 4        | 2850 | 2" | 67           |

# GMG

## Grinder Pumps Heavy Duty Designed

