

SM

Genleşme Depoları

Expansion Tanks



Değiştirilebilir membranlı
Membran= EPDM
CE normlarına uygun

Replaceable bladder
Bladder material= EPDM
Comply to CE norms

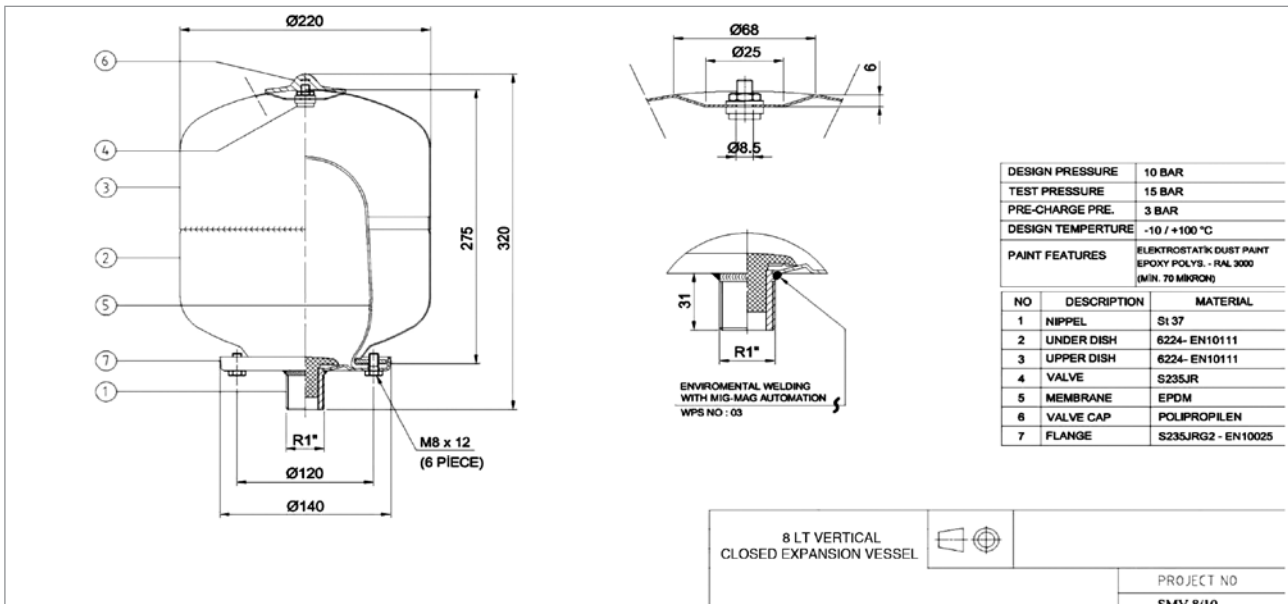
SET HALİNDEKİ GENLEŞME TANKI

PED 97/23/CE Direktifine Göre Değiştirilebilir EPDM Membran
İşletme Sıcaklığı = -10°C /+100°C
Şarj Öncesi Basıncı = 3 bar

EXPANSION TANKS FOR PACKAGED UNITS

According to directive PED 97/23/CE Replaceable EPDM Membrane
Operating Temperature = -10°C /+100°C
Precharged Pressure = 3 bar

Tank Tipi Tank Type	Model Model Name	İşletme Basıncı Operating Pressure (bar)	Yükseklik Height (mm)	Çap Diameter (mm)	Bağlantı Connection	Ambalaj Ölçüleri Packing Size (mm)
Dikey/Vertical	SM-V 8/10	10	320	Ø220	1"	23x23x32 carton box
Dikey/Vertical	SM-V 8/16	16	320	Ø220	1"	23x23x32 carton box
Dikey/Vertical	SM-V 8/25	25	325	Ø220	1"	23x23x33 carton box
Dikey/Vertical	SM-V 12/10	10	450	Ø220	1"	23x23x46 carton box
Dikey/Vertical	SM-V 12/16	16	450	Ø220	1"	23x23x46 carton box
Dikey/Vertical	SM-V 19/10	10	410	Ø260	1"	27x27x43 carton box
Dikey/Vertical	SM-V 19/16	16	410	Ø260	1"	27x27x43 carton box
Oval/Oval	SM-O 24/10	10	325	Ø360	1"	36x36x33 carton box
Dikey/Vertical	SM-V 24/10	10	470	Ø280	1"	28x28x47 carton box
Dikey/Vertical	SM-V 24/16	16	470	Ø280	1"	28x28x47 carton box
Dikey/Vertical	SM-V 24/25	25	470	Ø260	1"	26x26x47 carton box
Dikey/Vertical	SM-V 35/10	10	470	Ø380	1"	38x38x47 carton box



Genleşme Depoları

Expansion Tanks

DESIGN PRESSURE	10 BAR
TEST PRESSURE	15 BAR
PRE-CHARGE PRE.	3 BAR
DESIGN TEMPERATURE	-10 / +100 °C
PAINT FEATURES	ELEKTROSTATIK DUST PAINT EPOXY POLYS. - RAL 3000 (MIN. 70 MIKRON)

NO	DESCRIPTION	MATERIAL
1	NIPPEL	SI 37
2	UNDER DISH	6224- EN10111
3	UPPER DISH	6224- EN10111
4	VALVE	S235JR
5	MEMBRANE	EPDM
6	VALVE CAP	POLIPROPILEN
7	FLANGE	S235JRG2 - EN10025

12 LT VERTICAL CLOSED EXPANSION VESSEL

PROJECT NO
SMV 12/10

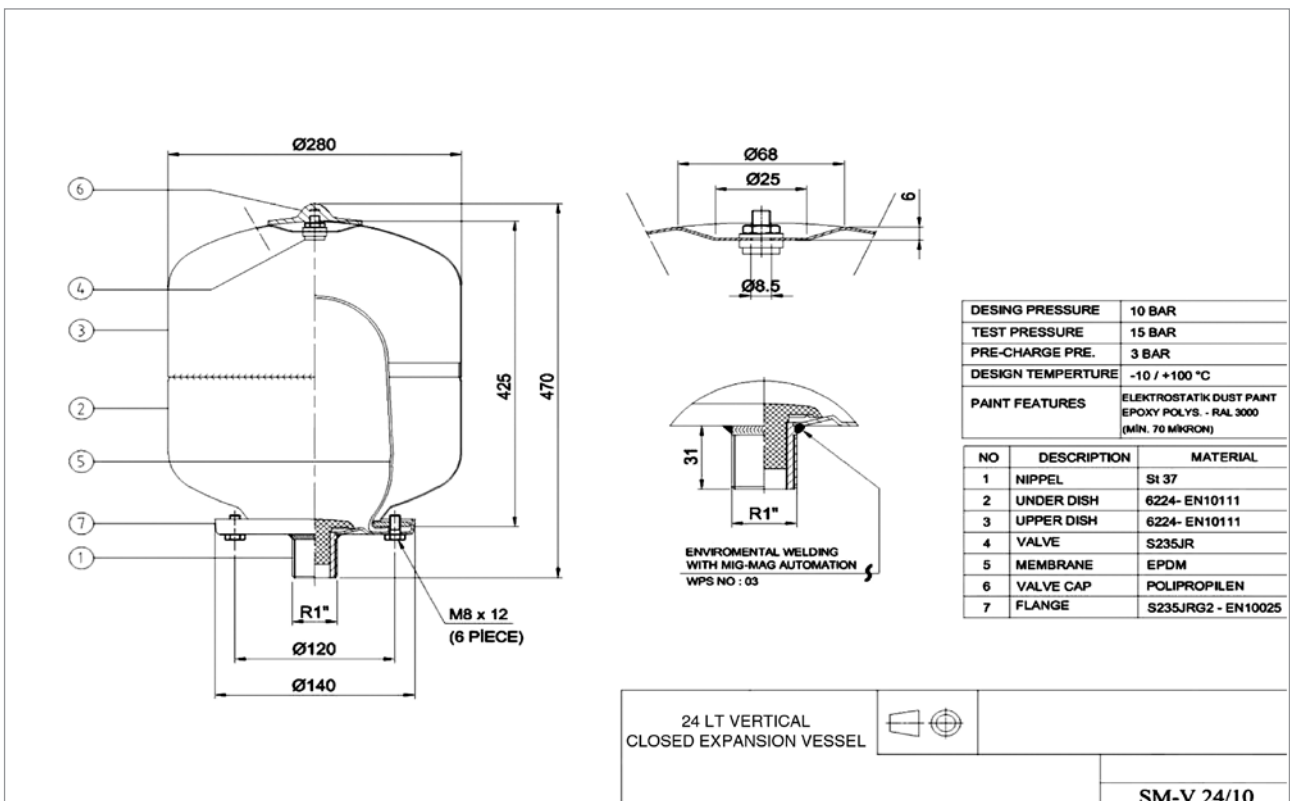
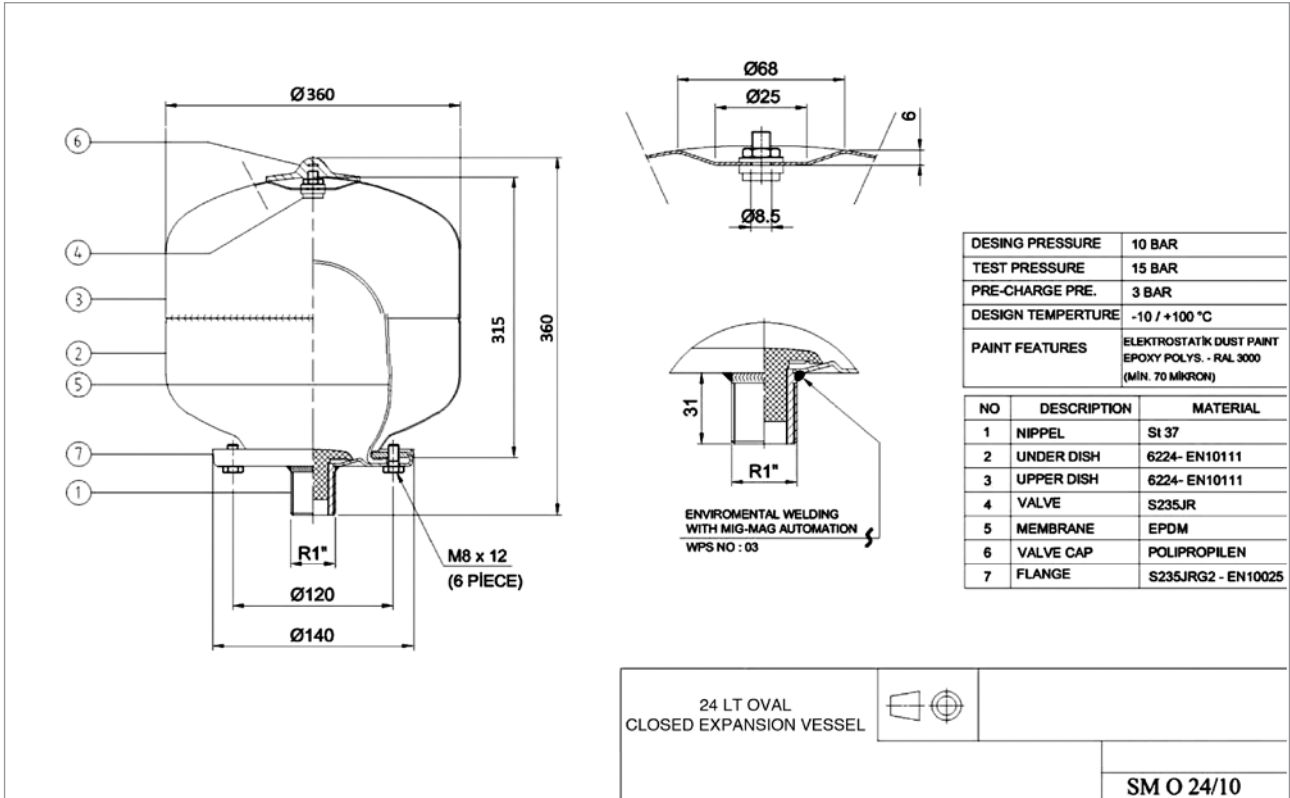
DESIGN PRESSURE	10 BAR
TEST PRESSURE	15 BAR
PRE-CHARGE PRE.	3 BAR
DESIGN TEMPERATURE	-10 / +100 °C
PAINT FEATURES	ELEKTROSTATIK DUST PAINT EPOXY POLYS. - RAL 3000 (MIN. 70 MIKRON)

NO	DESCRIPTION	MATERIAL
1	NIPPEL	SI 37
2	UNDER DISH	6224- EN10111
3	UPPER DISH	6224- EN10111
4	VALVE	S235JR
5	MEMBRANE	EPDM
6	VALVE CAP	POLIPROPILEN
7	FLANGE	S235JRG2 - EN10025

19 LT VERTICAL CLOSED EXPANSION VESSEL

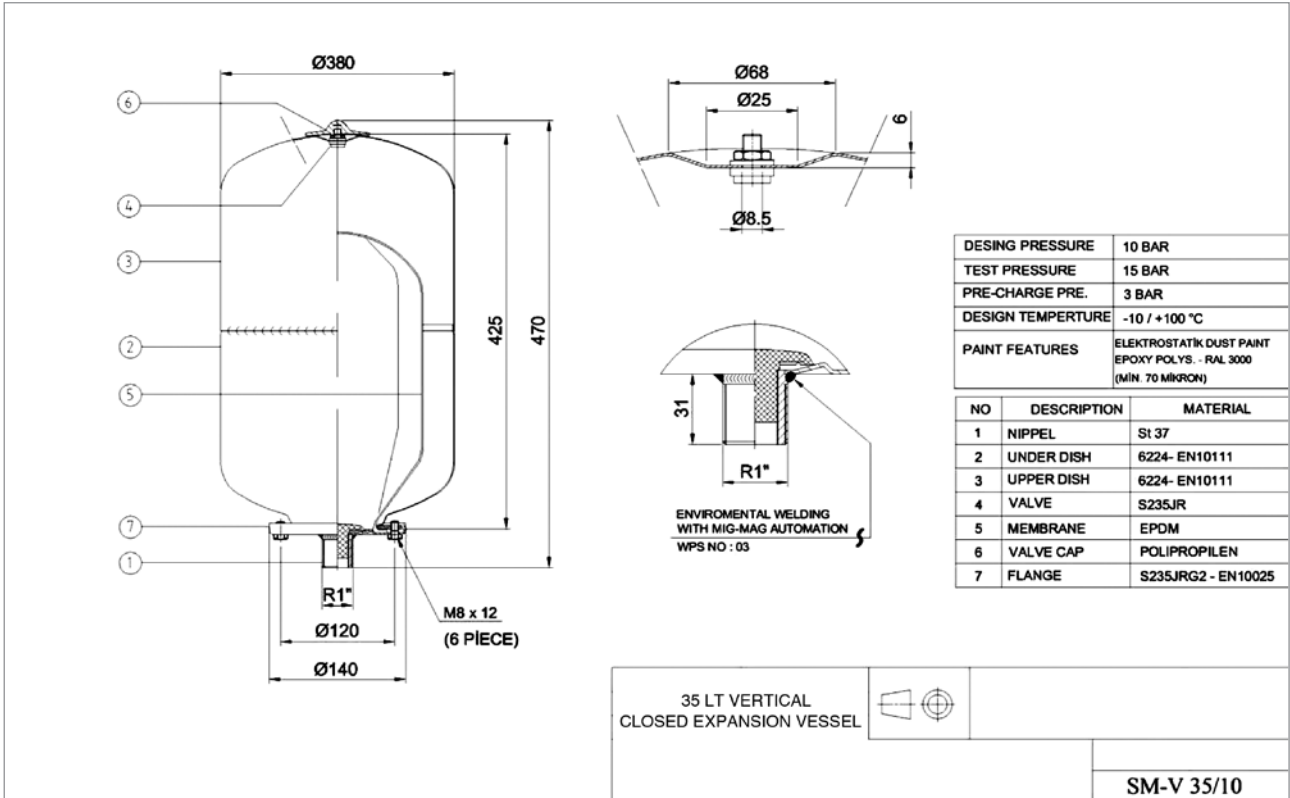
PROJECT NO
SMV 19/10

Genleşme Depoları
Expansion Tanks



Genleşme Depoları

Expansion Tanks



Genleşme Depoları

Expansion Tanks



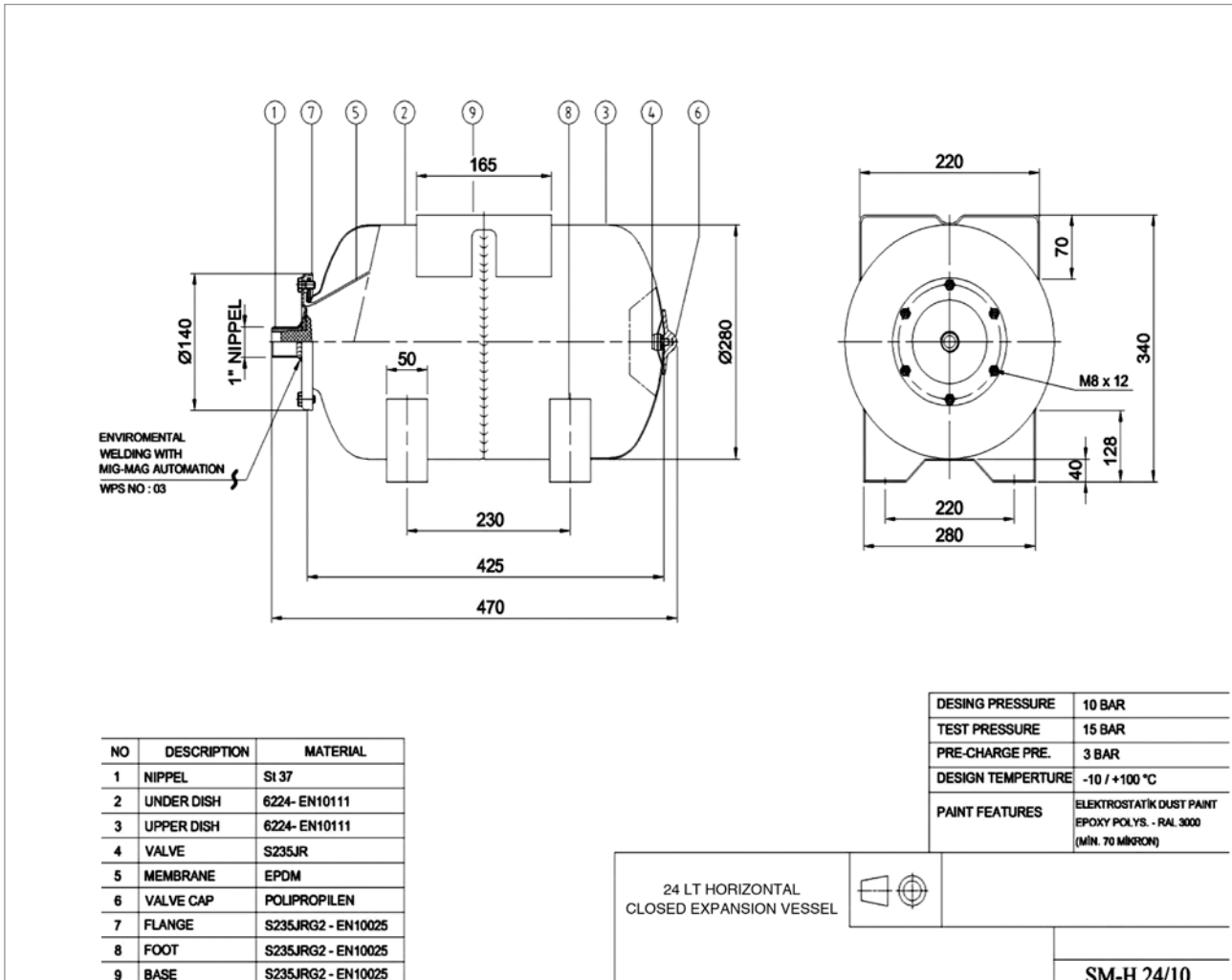
YATAY GENLEŞME TANKI

PED 97/23/CE Direktifine Göre
Değiştirilebilir EPDM Membran
İşletme Sıcaklığı = -10°C /+100°C
İşletme Basıncı = 10 bar
Şarj Öncesi Basıncı = 1,5 bar

HORIZONTAL EXPANSION TANKS

According to Directive PED 97/23/CE
Replaceable EPDM Membrane
Operating Temperature = -10°C /+100°C
Operating Pressure = 10 bar
Precharged Pressure = 1,5 bar

Tank Tipi Tank Type	Model Model Name	Yükseklik Height (mm)	Çap Diameter (mm)	Bağlantı Connection	Ambalaj Ölçüleri Packing Size (mm)
Yatay/Horizontal	SMH 24/10	470	280	1"	29x47x32 carton box
Yatay/Horizontal	SMH-INOX 24/10	490	325	1"	38x62x43 carton box
Yatay/Horizontal	SMH 50/10	620	380	1"	38x62x43 carton box
Yatay/Horizontal	SMH 60/10	670	380	1"	38x67x43 carton box
Yatay/Horizontal	SMH 80/10	720	430	1"	43x72x47 carton box
Yatay/Horizontal	SMH 100/10	800	460	1"	46x80x54 carton box



SM

Genleşme Depoları

Expansion Tanks



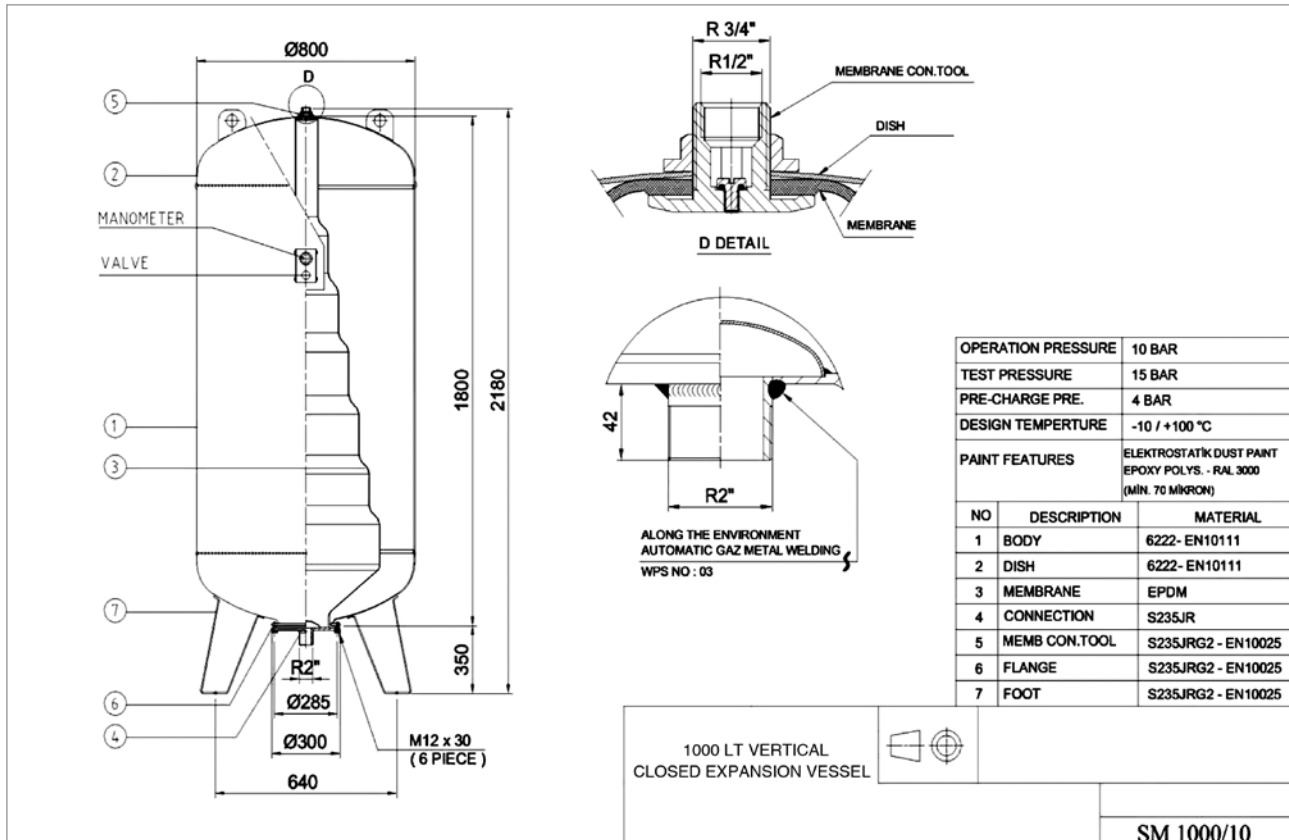
DİKEY GENLEŞME TANKI - 10 BAR

PED 97/23/CE Direktifine Göre
Değiştirilebilir EPDM Membran
İşletme Sıcaklığı = -10°C /+100°C
İşletme Basıncı = 10 bar
Şarj Öncesi Basıncı = 4 bar

VERTICAL EXPANSION TANKS - 10 BAR

According to Directive PED 97/23/CE
Replaceable EPDM Membrane
Operating Temperature = -10°C/+100°C
Operating Pressure = 10 bar
Precharged Pressure = 4 bar

Tank Tipi Tank Type	Model Model Name	Yükseklik Height (mm)	Çap Diameter (mm)	Bağlantı Connection	Ambalaj Ölçüleri Packing Size (mm)	
Dikey/Vertical	SM 50/10	750	380	1"	38x38x75	carton box
Dikey/Vertical	SM 60/10	810	380	1"	38x38x82	carton box
Dikey/Vertical	SM 80/10	960	430	1"	43x43x96	carton box
Dikey/Vertical	SM 100/10	990	460	1"	46x46x99	carton box
Dikey/Vertical	SM 200/10	1120	590	1¼"	55x55	pallet
Dikey/Vertical	SM 300/10	1230	640	1¼"	59x59	pallet
Dikey/Vertical	SM 500/10	1550	750	1¼"	69x69	pallet
Dikey/Vertical	SM 750/10	1950	750	2"	69x69	pallet
Dikey/Vertical	SM 1000/10	2180	800	2"	76x76	pallet
Dikey/Vertical	SM 1500/10	2380	960	2"	90x90	pallet
Dikey/Vertical	SM 2000/10	2520	1100	2"	100x100	pallet
Dikey/Vertical	SM 3000/10	2800	1200	2½"	110x110	pallet
Dikey/Vertical	SM 4000/10	3100	1450	3"	100x200	pallet
Dikey/Vertical	SM 5000/10	3720	1450	3"	100x200	pallet



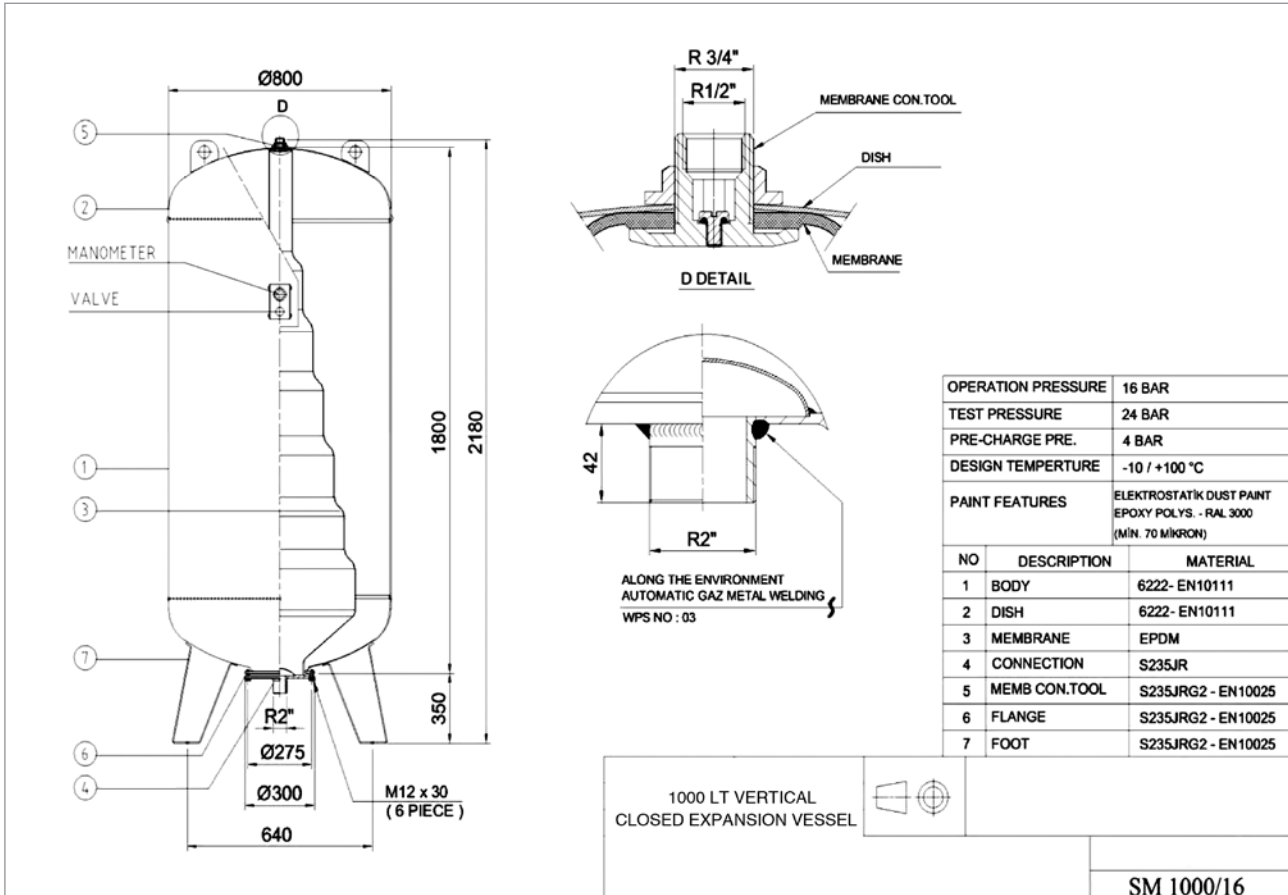
Genleşme Depoları Expansion Tanks



DIKEY GENLEŞME TANKI - 16 BAR
PED 97/23/CE Direktifine Göre
Değiştirilebilir EPDM Membran
İşletme Sıcaklığı = -10°C /+100°C
İşletme Basıncı = 16 bar
Şarj Öncesi Basıncı = 4 bar

VERTICAL EXPANSION TANKS - 16 BAR
According to Directive PED 97/23/CE
Replaceable EPDM Membrane
Operating Temperature = -10°C /+100°C
Operating Pressure = 16 bar
Precharged Pressure = 4 bar

Tank Tipi Tank Type	Model Model Name	Yükseklik Height (mm)	Çap Diameter (mm)	Bağlantı Connection	Ambalaj Ölçüleri Packing Size (mm)
Dikey/Vertical	SM 50/16	750	380	1"	38x38x75 carton box
Dikey/Vertical	SM 100/16	990	460	1"	46x46x99 carton box
Dikey/Vertical	SM 200/16	1120	590	1¼"	55x55 pallet
Dikey/Vertical	SM 300/16	1230	640	1¼"	59x59 pallet
Dikey/Vertical	SM 500/16	1550	750	1¼"	69x69 pallet
Dikey/Vertical	SM 750/16	1850	800	2"	69x69 pallet
Dikey/Vertical	SM 1000/16	2180	800	2"	76x76 pallet
Dikey/Vertical	SM 1500/16	2380	960	2"	90x90 pallet
Dikey/Vertical	SM 2000/16	2520	1100	2"	100x100 pallet
Dikey/Vertical	SM 3000/16	2800	1200	2¼"	110x110 pallet
Dikey/Vertical	SM 4000/16	3100	1450	3"	100x200 pallet
Dikey/Vertical	SM 5000/16	3720	1450	3"	100x200 pallet



SM

Genleşme Depoları

Expansion Tanks



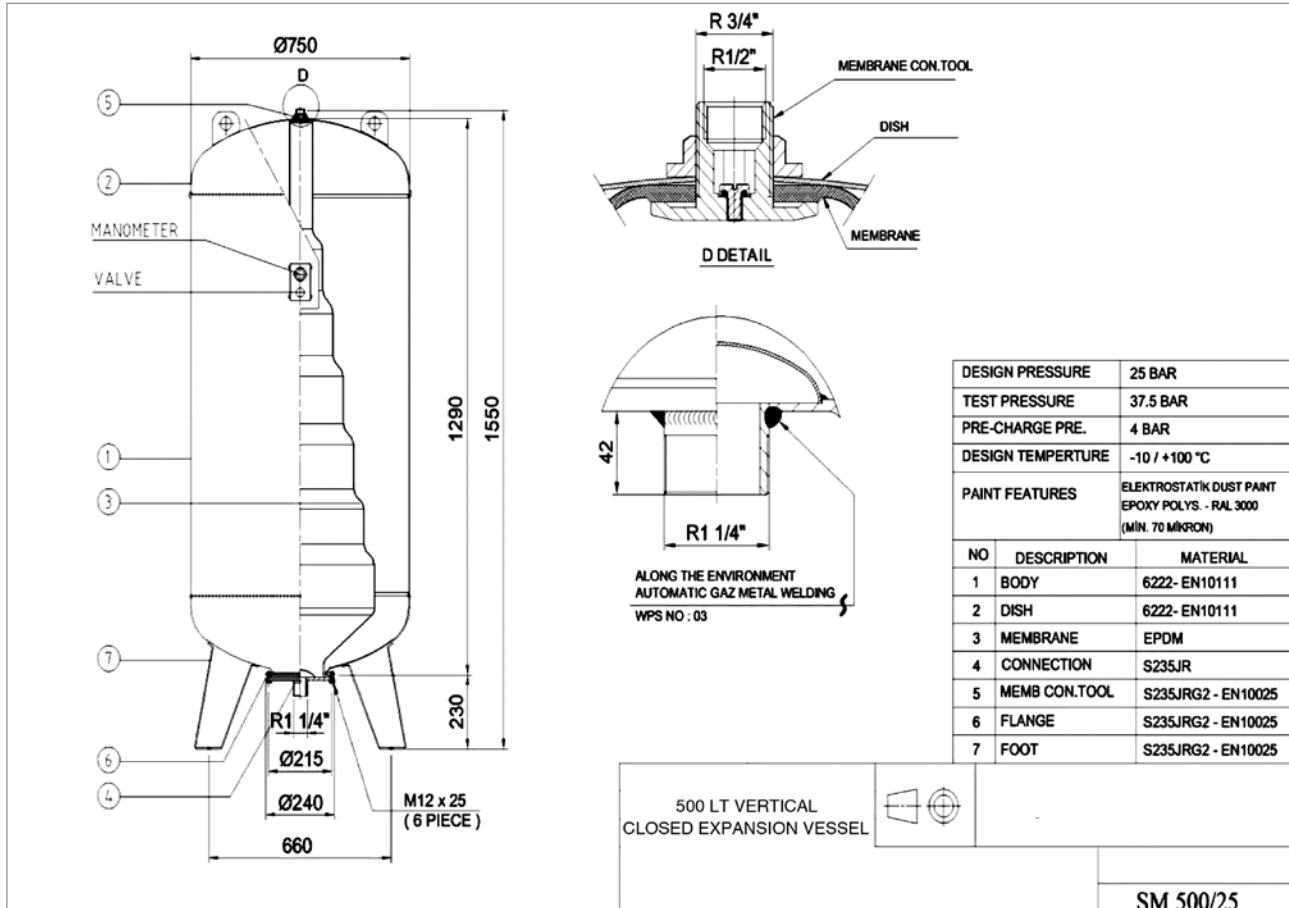
DIKEY GENLEŞME TANKI - 25 BAR

PED 97/23/CE Direktifine Göre
Değiştirilebilir EPDM Membran
İşletme Sıcaklığı = -10°C / +100°C
İşletme Basıncı = 25 bar
Şarj Öncesi Basıncı = 4 bar

VERTICAL EXPANSION TANKS - 25 BAR

According to Directive PED 97/23/CE
Replaceable EPDM Membrane
Operating Temperature = -10°C / +100°C
Operating Pressure = 25 bar
Precharged Pressure = 4 bar

Tank Tipi Tank Type	Model Model Name	Yükseklik Height (mm)	Çap Diameter (mm)	Bağlantı Connection	Ambalaj Ölçüleri Packing Size (mm)	
Dikey/Vertical	SM 100/25	990	450	1"	46x46x99	carton box
Dikey/Vertical	SM 200/25	1120	600	1¼"	55x55	pallet
Dikey/Vertical	SM 300/25	1230	640	1¼"	59x59	pallet
Dikey/Vertical	SM 500/25	1550	750	1¼"	69x69	pallet
Dikey/Vertical	SM 750/25	1850	800	2"	69x69	pallet
Dikey/Vertical	SM 1000/25	2180	800	2"	76x76	pallet
Dikey/Vertical	SM 1500/25	2380	960	2"	90x90	pallet



SM

Genleşme Depoları

Expansion Tanks

DEĞİŞTİRİLEBİLİR MEMBRANLAR / REPLACEABLE MEMBRANES - EPDM



Malzeme Rubber Material	Yükseklik Height (mm)	Kullanıldığı Mo- deller Usable For Models	Delikli With hole for tie beam
EPDM	248	SM 24	
EPDM	315	SM 35 / SM 50	
EPDM	315	SM 60	
EPDM	700	SM 80 / SM 100	x
EPDM	750	SM 150	x
EPDM	800	SM 200	x
EPDM	1000	SM 300	x
EPDM	1400	SM 500	x
EPDM	1600	SM 750	x
EPDM	2000	SM 1000	x
EPDM	2000	SM 1500	x
EPDM	2000	SM 2000	x
BUTYL	2515	SM 3000	x
BUTYL	2680	SM 4000	x
BUTYL	3440	SM 5000	x

KARŞI FLANŞ / COUNTERFLANGE

Çap Diameter	Bağlantı Connection	Malzeme Finish
95	1"	Galvanized
95	1"	AISI304

